



HOLLOW RIDGE

LUXURY TOWNHOMES
by Core Homes

Located off Hungry Hollow Road in the rolling hills between Apison and Cleveland

live on a higher level

Conveniently located to

5 minutes Waterville Golf Course
Red Clay State Park

15 minutes Apison, Collegedale
Lee University

30 minutes Volkswagen
Honors Golf Course
whitewater rafting

Offering

1,550 sq feet of open living space
2 bedrooms, 2.5 baths + bonus room

Granite countertops

Stainless steel appliances

LVP flooring throughout

Washer/dryer hookups

Covered rear deck

Individual garage

Dog park - planned for 2024



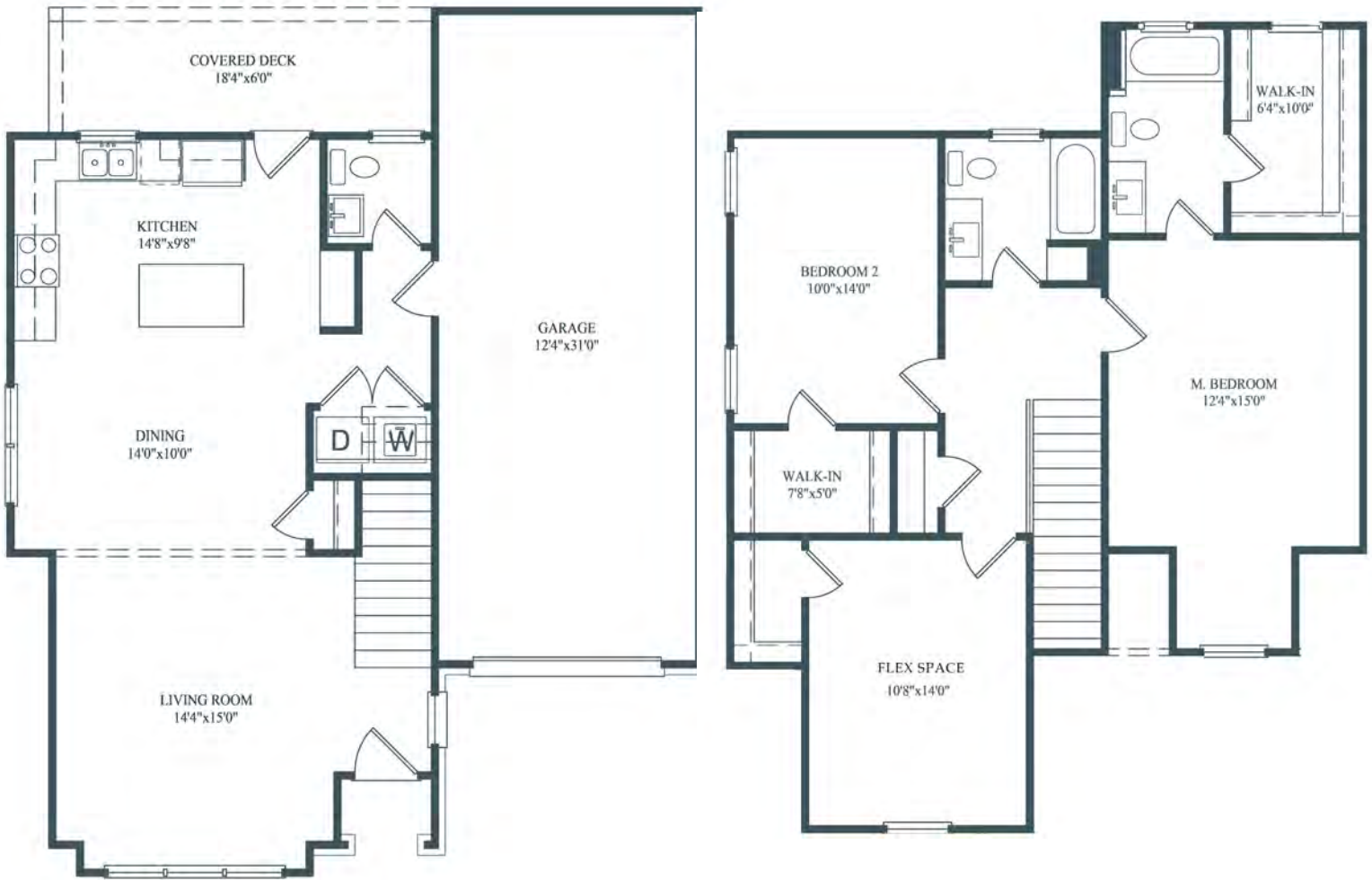
CORE MANAGEMENT

LUXURY TOWNHOMES AND APARTMENTS

423-708-7950

corehomes.com/new-home-communities/hollowridge

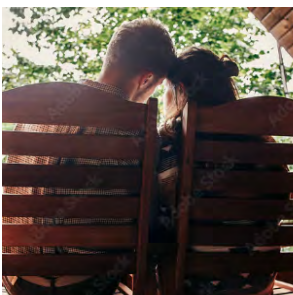
the crestview townhome



First Floor

Second Floor

Disclaimer: Plans are representational. Actual townhomes may deviate slightly from the ones presented on this flyer. Rent, deposit, and fee rates may change without notice. A pet policy is in place. Please check with leasing agent to confirm which pets are allowed.



CORE MANAGEMENT

LUXURY TOWNHOMES AND APARTMENTS

423-708-7950

corehomes.com/new-home-communities/hollowridge.com

